

GRINDSTONE INDUSTRIAL PROPERTIES

**FOR LEASE**

**7,850 SQUARE FEET  
OFFICE / WAREHOUSE  
+ 1,600 SF LEAN TO**

**1615 ARGENTINE BLVD  
KANSAS CITY, KANSAS**



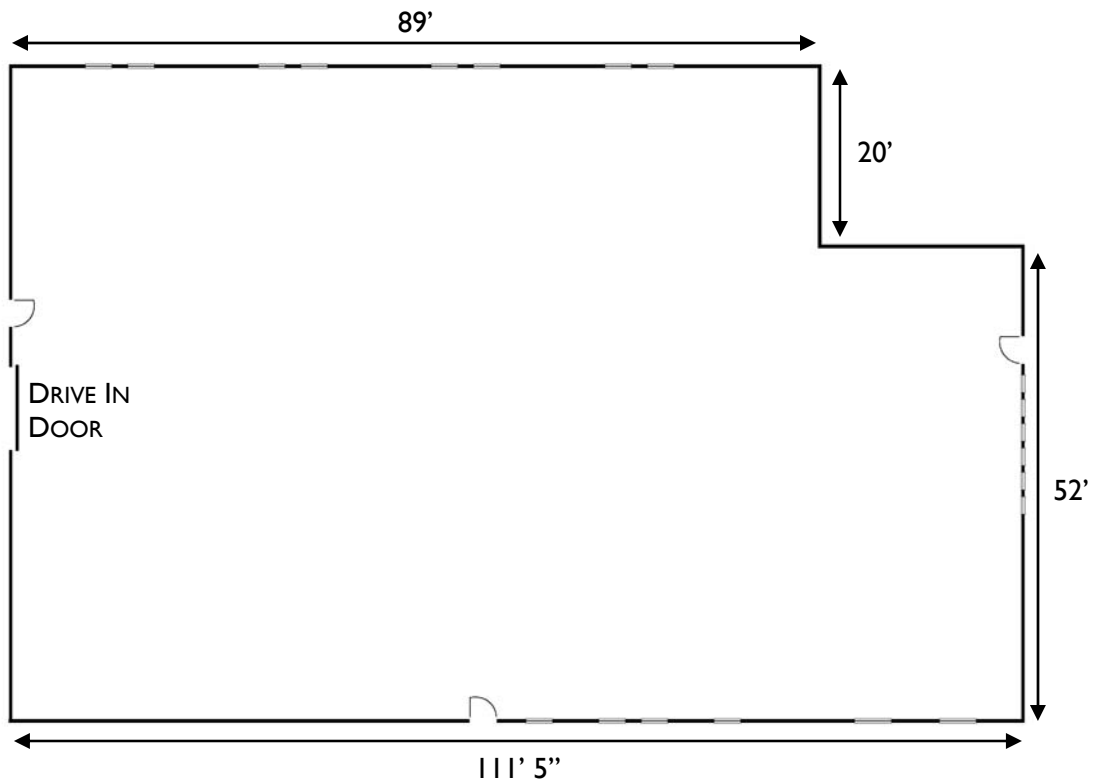
**CENTRAL ARMOURDALE**

**OFFICE / YARD**

**LOW RATE**



# FLOOR PLAN



## GRINDSTONE INDUSTRIAL PROPERTIES

### GRINDSTONE INDUSTRIAL PROPERTIES

1600 GENESSEE, 650  
KANSAS CITY, MO 64102

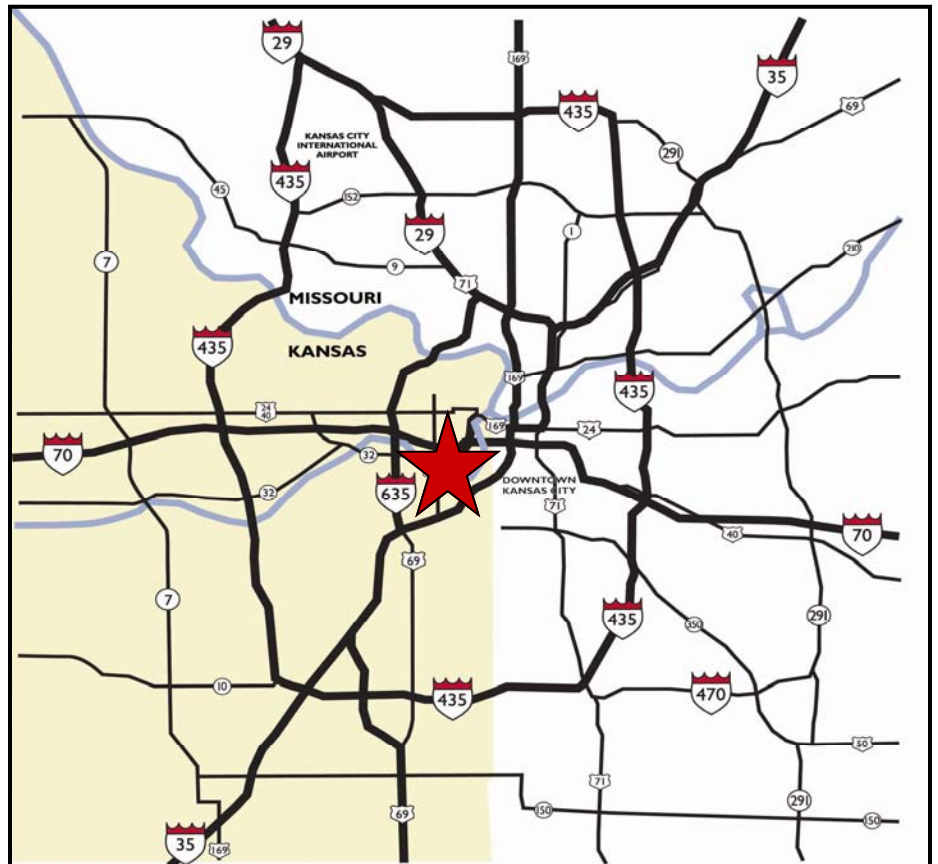
[www.grindstone-properties.com](http://www.grindstone-properties.com)



**PAUL E NEAL  
SIOR, CCIM  
PRESIDENT**

**816-421-1510**

[pneal@grindstone-properties.com](mailto:pneal@grindstone-properties.com)



**FOR MORE INFORMATION OR TO TOUR THIS PROPERTY  
PLEASE CONTACT:**

## GRINDSTONE INDUSTRIAL PROPERTIES

# 816-421-1500