

GRINDSTONE INDUSTRIAL PROPERTIES

**FOR SALE**

**10,100 SQUARE FEET**

**WAREHOUSE /**

**LIGHT MANUFACTURING**

**3637 FREMONT  
KANSAS CITY, MISSOURI**



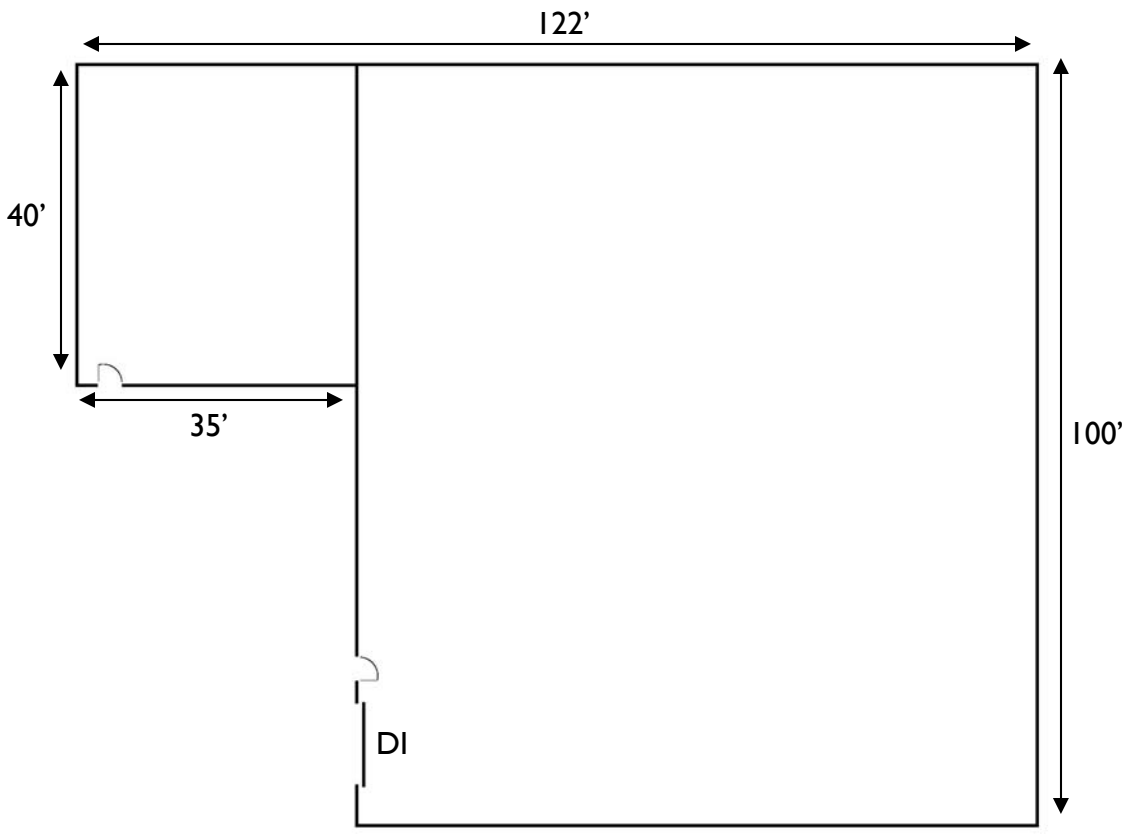
**MANUFACTURING FACILITY**

**HEAVY POWER**

# SPECIFICATIONS

<b>BUILDING SQUARE FOOTAGE</b>	<b>10,100</b>
<b>CONSTRUCTION</b>	<b>BLOCK</b>
<b>CLEAR HEIGHT</b>	<b>16'</b>
<b>LOADING</b>	<b>1 DRIVE IN DOOR</b> <b>■ 10' x 9'</b>
<b>ELECTRICAL</b>	<b>600 AMPS / 240 VOLTS / 3 PHASE</b>
<b>LIGHTING</b>	<b>FLUORESCENT</b>
<b>ZONING</b>	<b>M1-5</b>
<b>SALE PRICE</b>	<b>\$150,000</b>

# FLOOR PLAN



## GRINDSTONE INDUSTRIAL PROPERTIES

# GRINDSTONE INDUSTRIAL PROPERTIES

1600 GENESSEE, 650  
KANSAS CITY, MO 64102

[www.grindstone-properties.com](http://www.grindstone-properties.com)



**PAUL E NEAL  
SIOR, CCIM  
PRESIDENT**

**816-421-1510**

[pneal@grindstone-properties.com](mailto:pneal@grindstone-properties.com)



**FOR MORE INFORMATION OR TO TOUR THIS PROPERTY  
PLEASE CONTACT:**

**GRINDSTONE INDUSTRIAL PROPERTIES**

**816-421-1500**